

KIP

WORLD IS WIDE | WIDE FORMAT PRINTING SOLUTIONS



Multifunctional value & wide format performance

KIP 700m | KIP 7100

 **INSIGHT**
Insight Systems Ltd
w: www.insightsystems.co.uk
e: sales@insightsystems.co.uk
t: 01732 880600



Powerfully multifunctional, yet compact, smart & affordable

KIP 700m and KIP 7100 are versatile multifunctional printers for wide format document scanning, copying and printing. As upgradable systems, they cover varied user requirements and target especially affordable monochrome LED printing in environments that already have high-performance inkjet printers in use.

The KIP 700m is built for the workgroup, yet designed to satisfy the individual, and covers a lower wide format print volume of around 200 metres/month.

The KIP 7100 is the suitable choice for more extensive monthly volumes of 2,000 to 3,000 metres. It features a cut-sheet cassette with larger capacity, a second roll-feed, and offers enhanced stacking and folding capabilities. This wide format printer combines the best of both worlds – walk-up convenience and production power.



Both systems offer their target groups a range of attractive assets:

■ Building & construction industry

- Minimum space requirements make both products perfect for the smallest space, even a mobile site office.
- Walk-up convenience is ensured with the standard USB port, cloud functionalities as well as colour scanning and copying to inkjet, KIP Color printers and Konica Minolta bizhub multifunctionals.
- Simple and straightforward operation supports a minimal learning curve.

■ Architecture & engineering

- The KIP multifunctionals enable architects and engineers to produce consistent monochrome CAD applications with:
 - 600 x 600 dpi printing and scanning resolution for advanced colour scan and archiving applications, and processing even sensitive originals
 - USB port for users' walk-up convenience
 - Cost-effective pricing and economical use of space
 - Entry level monochrome LED equipment in addition to one or several inkjet products

■ Governmental organisations

- Ease of use, illustrated help menu on touch screen
- USB port to ensure document security
- Covers administrative needs for low volume A4 to A0 printing

■ Print providers and copy shops

- Easy-to-use, optimised print workflows and task automation ensure punctuality and serve specific needs
- All-in-one device for printing, copying, scanning, space-saving stacking and online folding
- Attractive low-cost LED printing
- USB port for users' walk-up convenience



Configurations of KIP 700m and KIP 7100

■ KIP 700m



KIP 700m copy/print system for decentralised and mobile environments



KIP 700m copy/print & colour scan system for users with existing inkjet plotters



KIP 700m multifunctional system with cut sheet tray for environments with flexible media handling

■ KIP 7100



KIP 7100 copy, print and scan system with integrated top stacking for decentralised environments



KIP 7100 System with print & original stacking for departmental workgroups



KIP 7100 System with K-1200 auto stacker for high productivity stacking in centralised print environments



KIP 7100 system with KIPFold online folding/flat stacking system for seamless workflow integration

Comprehensive KIP versatility for multifunctional efficiency

Both, KIP 700m and KIP 7100, are highly versatile and offer individual highlights for their respective targeted applications, some identical, some unique to either product:

■ Precision imaging

The KIP 700m and KIP 7100 deliver fast and accurate copies and prints using toner-based imaging technology that produces UV stable prints. KIP's 100% toner efficient high-definition print technology ensures rich blacks and smooth gradients. Superior 600 x 600 dpi print, copy and scan resolution captures fine details with remarkable tone clarity, keeping reproductions true to the original.



■ System convenience

With the compact design of the KIP 700m comes convenient front access to the touch screen, auto roll paper loading, system operation, and output of prints and copies.

■ Paper versatility

The automated paper loading accepts one (KIP 700m) or two (KIP 7100) up to 175-metre media rolls, 914 mm wide. Its paper option for cut sheets in standard sizes of up to A2 extends the range of prints that can be produced without switching rolls. The KIP 700m produces 2, the KIP 7100 3.3 A0 size prints per minute.

■ Ultimate document mobility

On both products, an integrated USB port provides convenient access to files stored on USB drives for instant viewing & printing of single documents or fully collated sets. In addition, originals may be directly scanned to a USB drive in a variety of file types, including multipage PDF, TIFF & DWF formats.

- Conveniently integrated with touch screen
- Print from & scan to integrated USB port
- Streamlines mark-up document workflow
- Colour scan-to-file and colour print & copy to inkjet





■ Enhanced production & productivity

The KIP 7100's productivity is designed to satisfy the most demanding needs of decentralised users. The versatile KIP 7100 can be upgraded to provide workgroups with multifunctional convenience. Its system software is ideal for decentralised environments and expandable to meet the need for centralised printing.

The KIP 7100 gives operators the flexibility to direct prints and copies to a preferred output destination – the integrated top stacking system or a rear KIP stacking system that can be optionally equipped for increased production. Maximum productivity is ensured with optional online folding for seamless workflow integration.

■ Features of KIP 700m and KIP 7100:

Precision design:

- Premier performance & quality
- Smart Eco2 design
- Colour touch controls
- 600 x 600 dpi print, copy & scan
- High definition print technology
- 100% toner efficient with zero waste
- Energy Star certified
- Approved for recycled paper
- Components 97% recyclable

Print Management software:

- Web-based view & print
- PC-based view & print
- PDF & DWF view, print & scan
- Colour workflow integration
- On-screen image preview
- Multi-page file support
- Windows 7 certified driver
- AutoCAD 2011 driver
- Cost reporting for all functions

Convenient operation:

- Walk-up user convenience
- Print, copy & scan touch control
- View & print sets from touch screen
- Print from / scan to integrated USB port
- Colour scan, view, print & copy to inkjet
- Auto media loading with roll-end caps
- On-screen system & operator guides
- Standard bond and inkjet paper (3" and 2" core)*
- Front print delivery system*
- Paper option for A4 to A2 size sheets*
- Integrated top stacking system **
- Direct prints to optional rear stackers**

* Only on KIP 700m

** Only on KIP 7100



Manage every job, monitor every task, account for every user

KIP ensures simple and straightforward operation on its KIP 700m and KIP 7100 systems. A range of functionalities and support tools ensures easy and direct access – all in the interest of maximised user efficiency and productivity.



■ Maximised power of the web for system management

The KIP 700m and KIP 7100 eliminate all barriers to efficient web-based system management. Their integrated PrintNET web server allows users and administrators to communicate effectively from remote locations with an intuitive new icon-based interface.

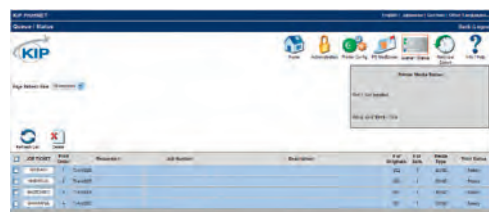


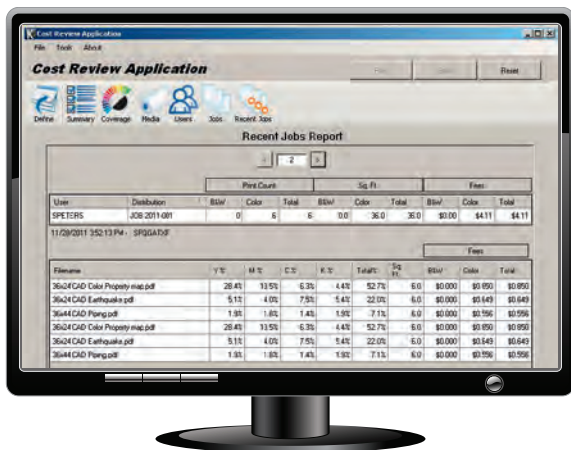
■ Complete communications hub

KIP 700m and KIP 7100 systems provide advanced features with simple operation for unparalleled wide format performance. Both are powered by KIP's total print management software for superior productivity and the tightest possible integration with existing network infrastructures. Their ability to communicate with inkjet printers and remote workstations increases performance; and the power to execute simultaneous copying, printing, and scanning tasks supports multiple users in busy workgroup environments.

- Meets strict security guidelines
- Integrated web server
- On-screen system & operator guides
- Print management applications

The operation of KIP 700m and KIP 7100 is simple and supported by direct access to the touch screen system and operator guides. Remote access to the guides is achieved via the KIP PrintNET web solutions.

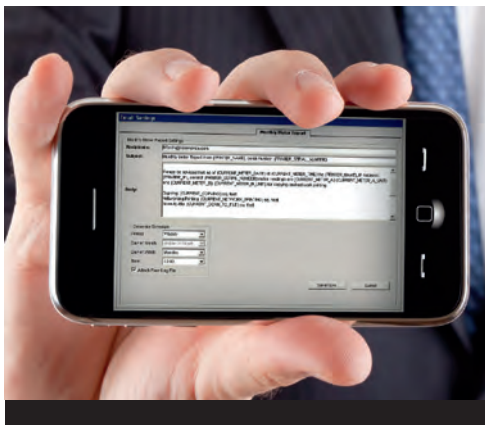




KIP Cost Review application

Print costs vary due to toner coverage, media type and system maintenance. These costs are calculated by the KIP Cost Review application and translated into detailed reports to accurately invoice users, departments, projects and clients. All reports generated by the application can be transmitted via email or printed on demand. Standard reports include:

- Printable usage summary
- View toner coverage report
- View media details
- View recent jobs report



KIP Track system

When activated, the KIP Track system requires operators to enter user name & password information before operating a KIP system. Activity reports can then be generated related to individual users or projects. The KIP Track print controls are integrated with the KIP Cost Review application and included in all KIP print production software applications.



Versatile system configurations

The KIP 700m and KIP 7100 multifunction systems are available in a variety of configurations and are easily upgradable. This gives users the versatility to select an initial system with features to suit immediate requirements, and to extend the functionality with growing needs.

Key codes for feature access

Additional features can be easily implemented into the KIP 700m and KIP 7100 via key code entry on the touch screen.

Total print management



■ KIP Print

KIP Print network printing software is an easy to use application designed to provide operators with a fast and accurate means of producing high quality print sets from all types of wide format digital files. An intuitive ribbon style interface with an emphasis on job building features column browsing, colour thumbnail previews, and facilitates total preflight control. Colour and b/w documents are efficiently selected for printing in collated sets with the ability to designate custom output preferences before print submission.

KIP Print features

- New graphical user interface
- Convenient automatic installation and setup
- Windows 7 style ribbon bar for easy feature selection
- Thumbnail preview and image size while selecting files
- Graphical choice of predetermined image settings
- Forced scaling to page size and roll width
- Two-up printing for multi-copy nesting
- Output size updates as scaling is adjusted
- WYSIWYP thumbnail image viewer
- Custom job build columns
- Re-order and set individual settings for multi-page files
- Custom fold pattern for each file
- KIP Cost Review application
- KIP track system

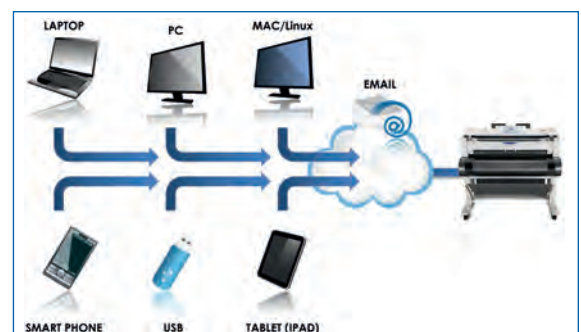
■ KIP PrintNET

KIP PrintNET is a true web-based print production tool that delivers powerful colour file viewing & printing, job queue management and administration features without the need to install any software applications on network computers. Users may select and send single or multiple files to KIP systems, complete with image adjustments such as scaling, stamping and colour management. In addition, KIP PrintNET generates email reports detailing system usage on demand or at designated intervals.



■ KIP Cloud printing

Cloud printing is a convenient, driverless print solution that lets casual users forget that complex front end printer software ever existed. With print job setup and submission via email, users benefit from problem-free remote printing to the mailbox/queue of any KIP printer, or configurations that bypass the mailbox for immediate output.



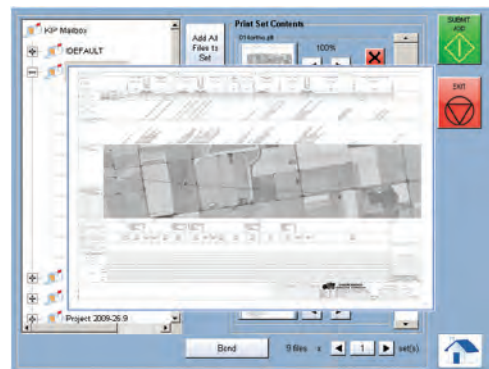


■ Touch screen printing

The KIP 700m and KIP 7100 provide the power of touch controls to view, scale, organise and print file sets from USB drives, network locations or mapped CD/DVD drives. Total operator efficiency is achieved through use of the central touch screen, the intuitive interface that displays all system control settings on one screen to enhance productivity.

View & print touch controls

- From integrated USB port
- From network locations
- From mailboxes
- View images prior to printing
- Set number of prints
- Easily resize images
- Simple collation options



Copy & scan touch controls

- Copying of collated sets
- Recall, edit & reprint previous jobs
- Set copy & concurrent print
- Convenient quality presets
- Apply digital stamps
- Scan-to-email and USB drives
- Scan directly to multi-page PDF, TIFF or DWF



Powerfully multifunctional, yet compact, smart & affordable

■ Konica Minolta Direct Print for KIP

Konica Minolta Direct Print for KIP is an integrated view, print and copy utility that connects KIP systems and Konica Minolta MFPs – making document viewing, copying and printing simple and fast. Konica Minolta Direct Print for KIP has been integrated into the KIP touch screen interface enabling designated users to maximise output and quality while minimising the time invested in producing prints of superb colour accuracy. No additional hardware or software is needed.

The advantages

- Saves time and money printing e.g. half size sets on Konica Minolta MFPs
- Supports both colour and monochrome documents
- Closed loop colour calibration for advanced colour accuracy
- Batch processing and job submission to Konica Minolta MFPs and KIP systems
- Simple, easy to use application, saves time and reduces learning curve



■ KIP Color Advanced software

The powerful KIP Color Advanced software is accessed via the KIP system's touch screen and provides versatile colour scan, copy and print applications designed to meet the demands of advanced operators. KIP Color Advanced stands for efficient colour copying and printing to wide format inkjets. Features such as printing of collated sets and colour management provide advanced control over print resources.

KIP Color Advanced Print

- Integrates with single or multiple printers
- Colour RIP system for graphic and technical files

KIP Color Advanced Scan

- Supports a full range of colour file formats
- Includes scan-to-email, USB drives, mailboxes or network

KIP Color Advanced Copy

- Copy to one or several printers via network connection



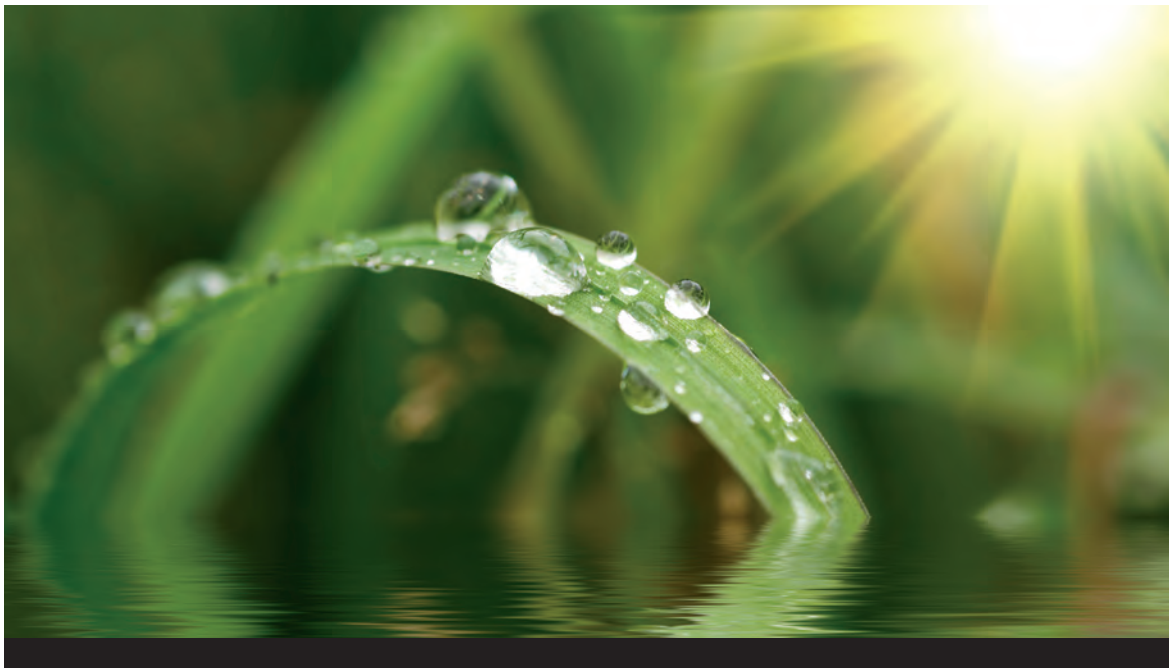
■ Certified Application Drivers

The KIP application drivers support 32 and 64 bit printing features including set collation, fast spooling for multiple copies or sets, data tracking for job accounting and media selection.

- Microsoft Windows 7 Certified 32 & 64 bit print drivers
- Drivers for AutoCAD versions up to 2012
- Citrix ready



The colour of KIP is green



■ Smart Eco² Design - Economical & Ecological

The Energy Star® qualified KIP 700m and KIP 7100 employ adjustable sleep modes to keep power consumption to a minimum while providing fast print times to keep busy workgroups moving. High yielding, 100% efficient high definition toner delivers on the promise of maximum system uptime. In addition, the KIP 700m and KIP 7100 feature a reduced maintenance cycle to minimise maintenance times. These KIP products are part of KIP's initiative to ease environmental burdens in all stages of a product's life-cycle.

KIP printers and systems feature these earth conscientious aspects:

- Energy Star qualified
- ROHS compliancy
- ISO 14001 standards
- Ozone emissions filters
- UL/UL-C approved
- 100% toner efficiency – no waste
- Organic, recyclable photoreceptors
- Recyclable toner containers
- Prints on recycled paper
- Ensure minimal paper waste
- Automatic Image Rotation and Media Selection



Technical specifications

Print technology

Technology

LED printer with KIP HDP Plus technology

Resolution

600 x 600 dpi

Toner efficiency

100%; no waste

Exposure

Organic photoconductor

Fusing technology

Oil-free, heat & pressure fusing unit

Operator interface

Illustrated operator guides displayed in full colour on integrated touch screen interface

Productivity

KIP 700m:

Print speed

2 A0 pages per minute

First-print-out time

80 seconds for A0

Warm-up time

2 minutes

KIP 7100:

Printing speed

3,3 A0/minute

First-print-out time

18 seconds for A1

Warm up time

< 4.3 minutes

Media

KIP 700m:

Media sources

1 roll (2", 3" core), media bypass

Options Paper tray

20 sheets from A2 to A4, slide-in set holder kit (to avoid mixed prints in paper output)

Length

210–2,400 mm

Optional length

3,600 mm

KIP 7100:

Media sources

2 rolls, 1 by-pass,
1 multi cut sheet feeder cassette
50 sheets from A2 to A4 (option)

Maximum length

6 m

Optional length

200 m

KIP 700m/KIP 7100:

Media types

Plain paper, tracing paper, film

Paper weight

Plain paper 64–84 gsm; tracing paper 80 gsm;
film 75 micron

Media width

Min. 210 mm, max. 914 mm

Media trimming

Automatic trimming of loaded roll

Output size

Width 210–914 mm

System data

KIP 700m:

Dimensions (W, D, H mm)

1,245 x 680 x 611 (excluding stand)

Weight

144 kg (excluding stand)

Power supply

220–240 V, 50/60 Hz, 10A

Power consumption

Stand-by: <14 W

Printing: 1.5 kW

Noise

Stand-by: 51 db

Printing: 60 db

KIP 7100:

Dimensions (W x D x H mm)

1,346 x 704 x 1,105 (without user interface)

Weight

244 kg

Power supply

220-240 V, 50/60 Hz, 7 A

Power consumption

Stand-by: 30 W

Printing: 1,68 kW

Noise

Stand-by: 60 db

Printing: 65 db

Safety approvals

TUV GS, CE, UL, FCC, CC

Options for KIP 7100:

Optional stacking solutions:

Print receiving tray

Rear-stacking option for prints

Print and original stacking system

Rear-stacking option for 100 mixed sized prints and copies

K-1200 Horizontal Auto Stacker:

Auto stacking system for up to 1000 prints /copies

Optional Folding Solutions:

KIPFold

Online folder for KIP 7100

KIP 700m/KIP 7100:

KIP 600A Scanner

Scanning method

Contact Image Sensor (CIS)

Light source

LED (R/G/B)

Original feeding

Face up

Scan width

Min. 279 mm, max. 914 mm

Scan length

Min. 210 mm, max. 6,000 mm

Optical resolution

600 dpi

Digital resolution

200/300/400/600 dpi

Original thickness

Min. 0.05 mm, max. 1.60 mm

Scanning speed

60 mm per second

KIP IPS 7.4 Software Suite

Platform

Microsoft Windows® XP Embedded

Standard configurations

1. Copier + Printer via USB + Network Printer
2. Copier + Printer via USB + Network Printer + monochrome & colour Scanner

Options:

Colour Scanner via KIP Color Advanced Scan (std. with configuration 2)

Colour Copy via KIP Color Advanced Copy

Colour Print via KIP Color Advanced Print

File formats

HPGL, HPGL/2, HP-RTL, TIFF, CALS type 1, EDMICS

(C4), DWF, CalComp 906/907/951, Adobe® Post-Script® / PDF (optional with KIP submission tools)

Output size (optional with KIP submission tools)

Security

Administrator selectable security levels

Interface

Ethernet 10/100/1000 Base T, USB 2.0,

Serial Port RS232-C

Network protocols

TCP/IP, NetBEUI(smb); other protocols supported

through external print server

Drivers

KIP application drivers

Windows 2003, 2008, XP, Vista and Windows 7 (32 and 64-bit versions), Microsoft WHQL certified

KIP HDI driver

AutoCAD up to 2011

Submission Utilities

KIP Print

PC based submission utility

KIP PrintNET

Web browser based submission utility



- Energy Star
- ROHS compliant
- ISO 14001 standard
- Ozone filters
- 100% toner efficiency, no waste
- Organic, recyclable photoreceptors



KONICA MINOLTA